

## LAND AVAILABLE

# VULCAN DRIVE

ERLANGER, KY 41014

ZONING: INDUSTRIAL PARK

## 17 ACRES



### PROPERTY HIGHLIGHTS

- Join L'OREAL USA, Regal Power Transmission Solutions, and Graham Packaging
- Rail access
- Utilities at the site

### IDEAL USES

- Distribution
- Assembly
- Manufacturing
- Fulfillment
- Packaging

#### BRETT LOWERY

859.292.5548 office 937.974.5631 cell

[blowery@corporex.com](mailto:blowery@corporex.com)

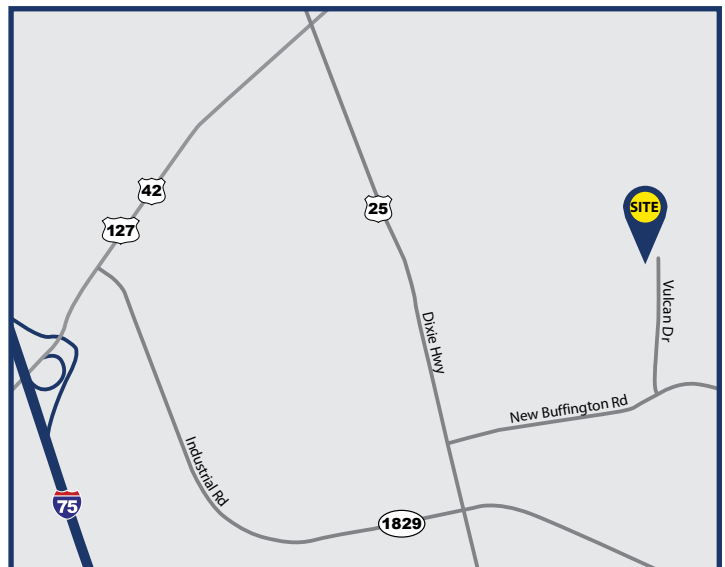
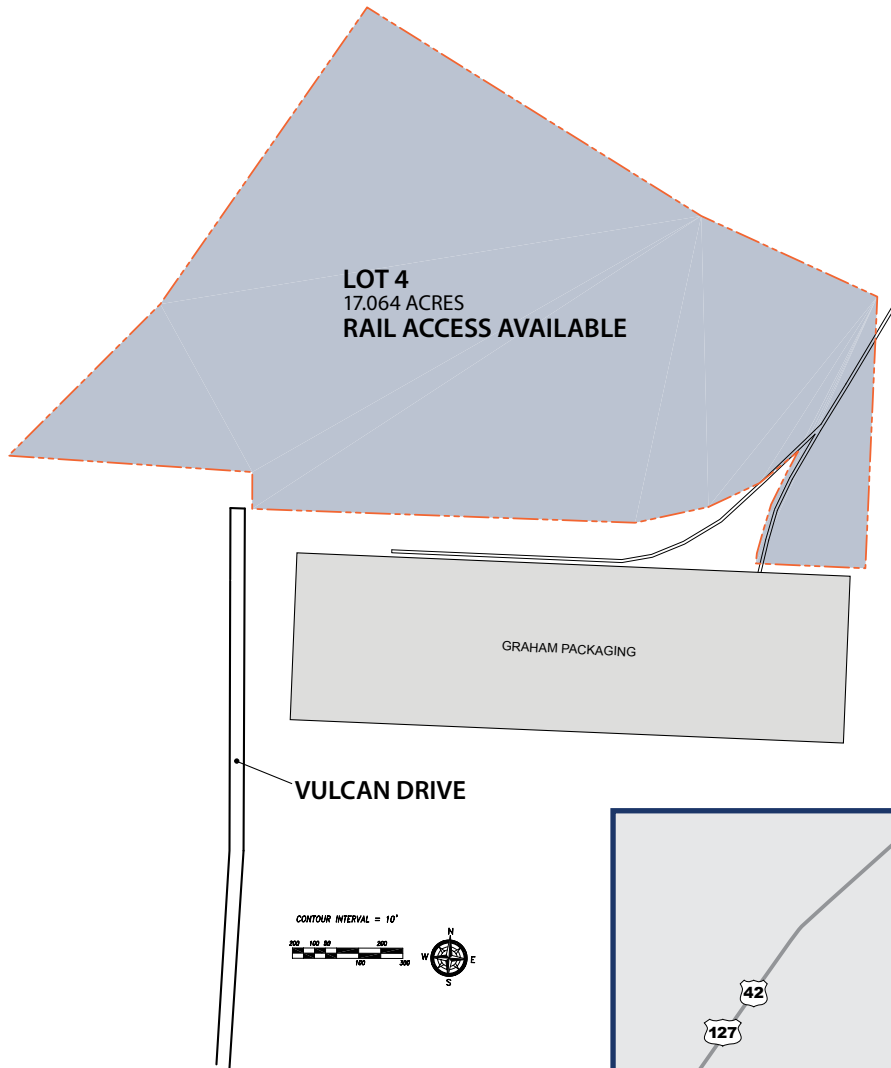
[corporex.com](http://corporex.com)



# LAND AVAILABLE

## VULCAN DRIVE

ERLANGER, KY 41014



**BRETT LOWERY**

859.292.5548 office 937.974.5631 cell

blowery@corporex.com

corporex.com

