



CIRCLEPORT

A WORLD-CLASS,
650-ACRE, MIXED-USE
DEVELOPMENT

Developed by **Corporex**

CIRCLEPORT REGIONAL OVERVIEW

FORTUNE 500 COMPANIES

The region ranks in the nation's top 10 markets for number of Fortune 500 headquarters per million residents, higher than New York, Boston, Chicago, or Los Angeles. The area also supports more than 450 foreign-owned businesses and has a thriving entrepreneur ecosystem.



NATIONALLY RANKED COLLEGES & UNIVERSITIES

CIRCLEPORT is located within a two-hour drive of many colleges and other higher education institutions providing a robust pipeline of 174,000 Graduates per year within 100 miles.



PROFESSIONAL SPORTS TEAMS



P&G Headquarters



Kroger Headquarters



Great American Ball Park
Home of Cincinnati Reds



University of Cincinnati



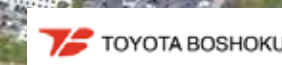
University of Kentucky



Xavier University



- 1.5 Billion investment
- 2,000 Jobs



CIRCLEPORT

650-ACRE MIXED-USE DEVELOPMENT



NORTHERN KENTUCKY HIGHLIGHTS



6th Largest Cargo Airport
in North America and
12th largest globally

(Airports Council International/ACI 2023)



Cincinnati MSA
**Home to 5 Fortune
500 company HQs**



Home to Major Regional HQ
Amazon Air, Prysmian Group, Perfetti
Van Melle USA, Step CG, CTI, Fisher
Homes, St. Elizabeth Healthcare, Bexion
Pharmaceuticals, and more

(BE NKY, 2024)



**#4 Best City
for Recreation**

(WalletHub, 2021)



CIRCLEPORT HIGHLIGHTS



**Prominent
Visibility**
on three major
highways with
175,000 ADT



One Exit
from CVG
Airport



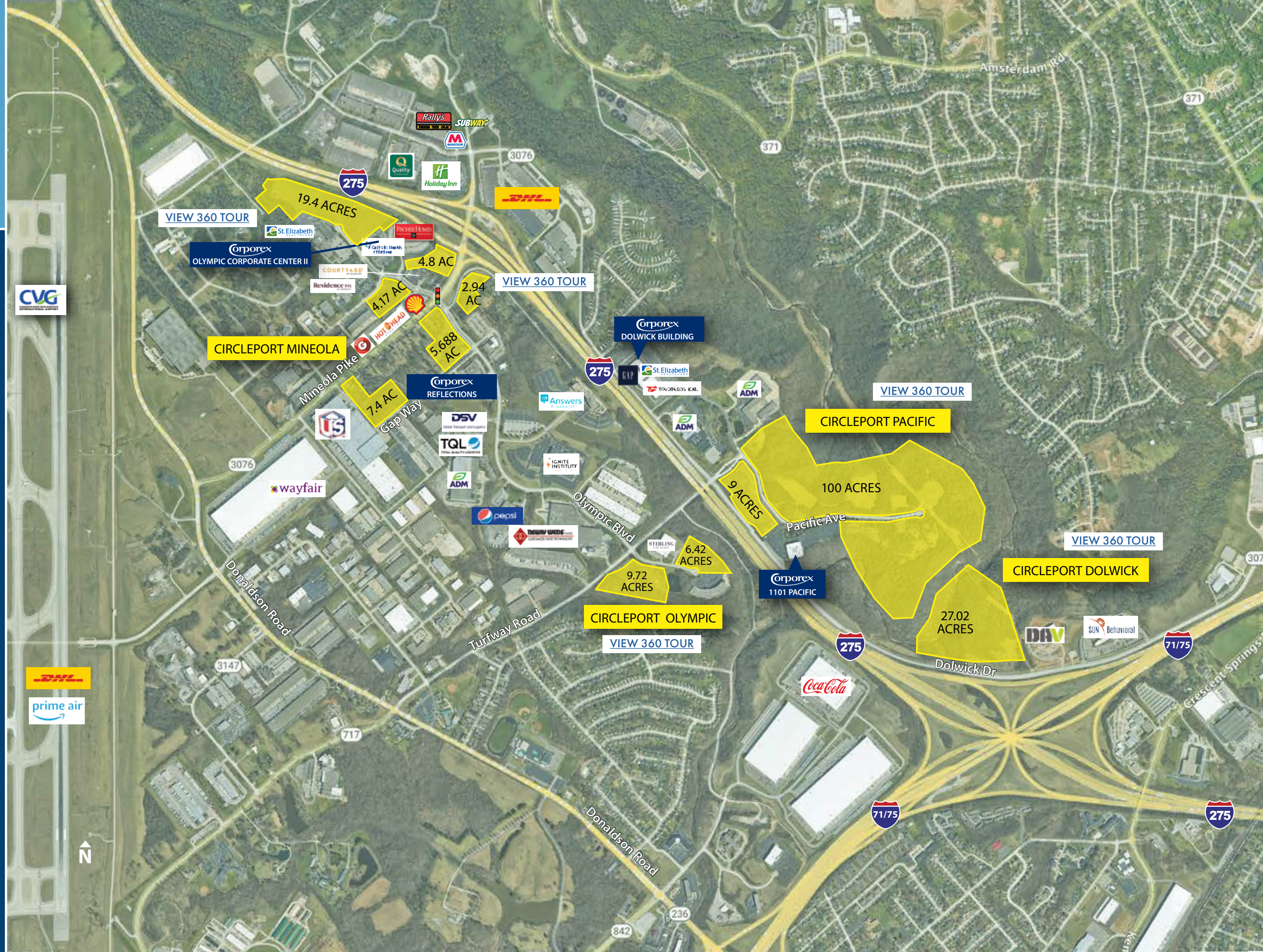
Adjacent to Amazon Air Hub,
Amazon distribution facilities, and
DHL, totaling **9,000 employees**
(Business Courier 2023 Book of Lists)



**CVG Airport, home to Amazon Air's Global
US Hub and DHL Express' Global Superhub
for the Americas, had largest cargo volume growth
amongst top 20 airports in 2023**
(Airports Council International/ACI, 2023)

DEVELOPMENT OVERVIEW

CIRCLEPORT



71 75 160,000 ADT

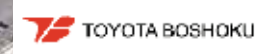
27 ACRES

100+ ACRES
AVAILABLE

1101 PACIFIC
80,000 SF Available



275 87,000 ADT



CIRCLEPORT

Mineola Pike Road Widening
to 5 Lanes in Final Stages

5.6
Acre Site



4.8
Acre Site

COURTYARD
BY MARRIOTT



Potential Future Retail & Hotel – 4.8 Acre Site

2.94
Acre Site

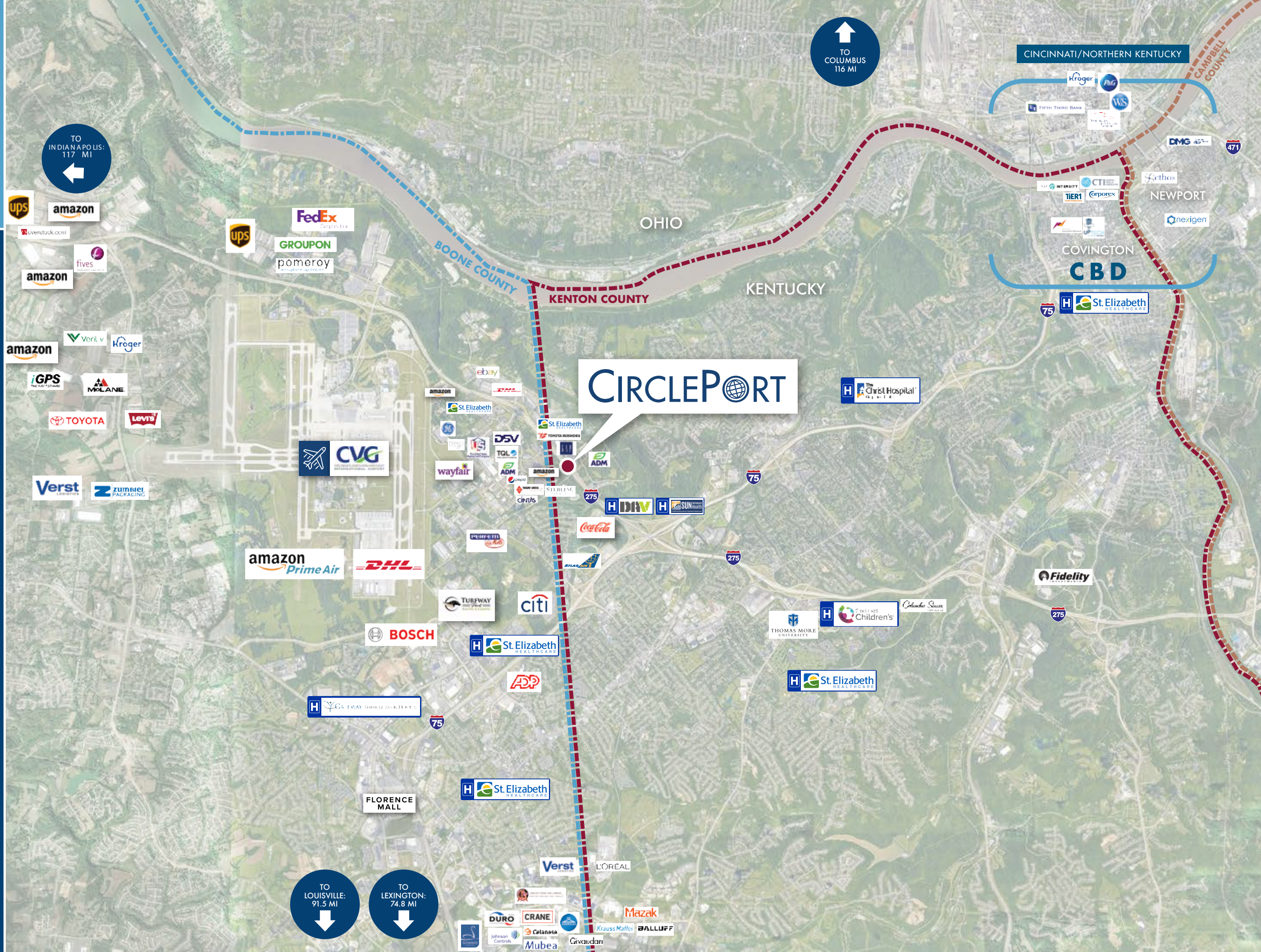
RAMP TO I-275

MINEOLA PIKE

CIRCLEPORT

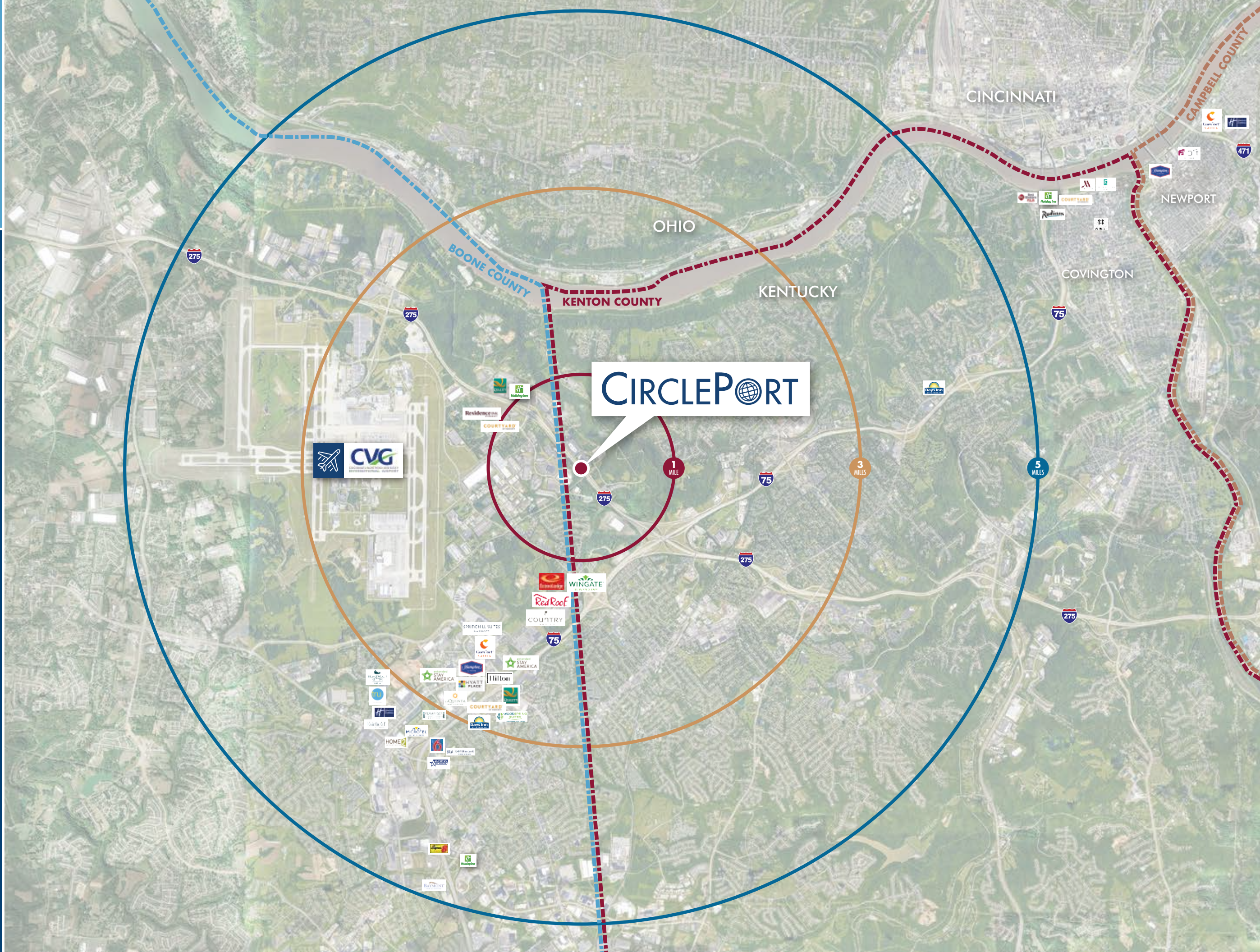
MAJOR
EMPLOYERS
& HOSPITALS

CIRCLEPORT



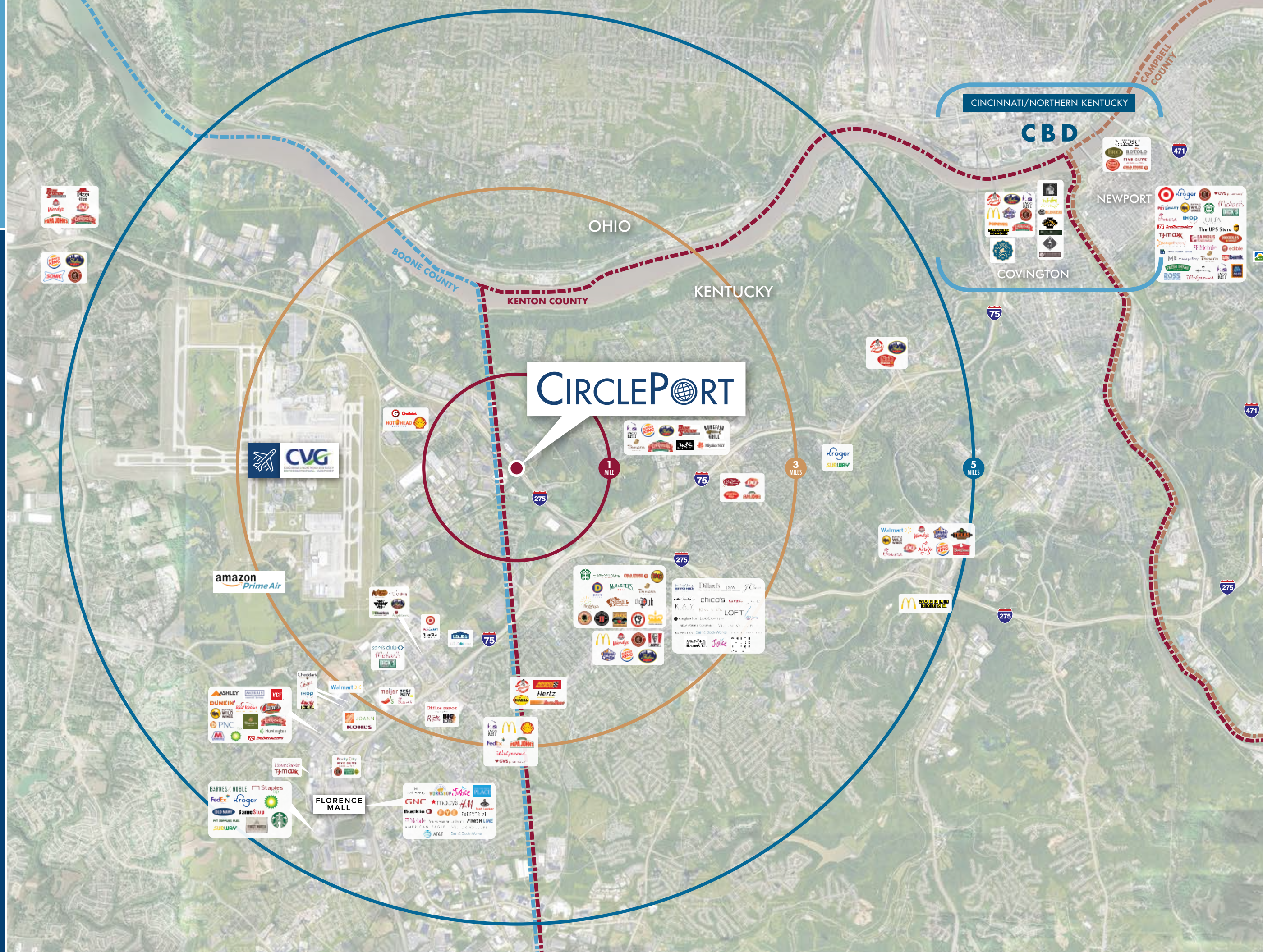
HOSPITALITY

CIRCLEPORT



RETAIL & RESTAURANTS

CIRCLEPORT

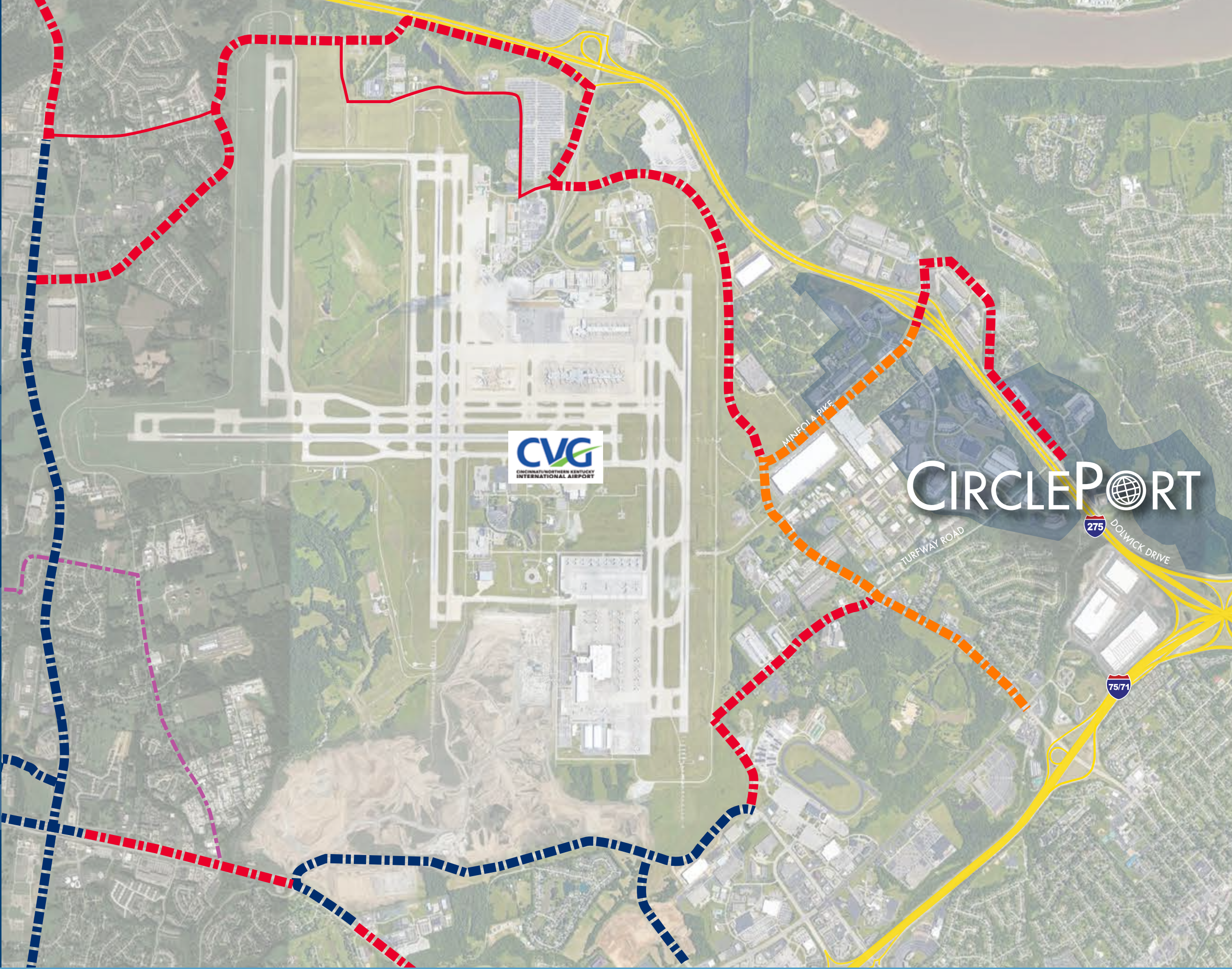


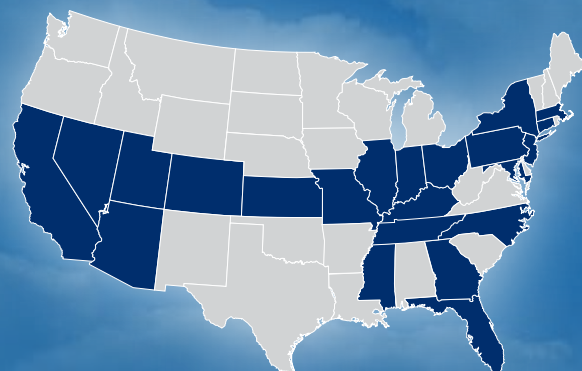
MULTI-USE TRAIL

ESTIMATED 20 MILES
UPON COMPLETION

MULTI-JURISDICTIONAL

- EXISTING
- FUNDED
- UNDER CONSTRUCTION
- PROPOSED





NEARLY 60 YEARS

OF DELIVERING REAL ESTATE
EXCELLENCE FROM COAST TO COAST

**DEVELOPED
IN 22+ STATES
ACROSS THE U.S.**

**BUILT
25 MILLION+
SQUARE FEET**

**\$1B+ ASSETS
UNDER MANAGEMENT
(AUM)**

**DEVELOPED/OWNED
AND OPERATED
40+ HOTELS**

**CREATED
10+ BUSINESS
PARKS**

**\$2.9M CORPORATE
AND FOUNDATION
GIVING IN 2023**

**INNOVATED A
SUCCESSFUL
CHAIN OF
HIGH-TOUCH
SPORTS CLUBS**

**LAUNCHED AND SOLD A
NYSE COMPANY,
REALIZING A
57% TOTAL
RETURN
TO INVESTORS IN 34 MONTHS**

**CONTINUES TO
ACQUIRE, DEVELOP
AND OWN
WORLD-CLASS
REAL ESTATE ASSETS
IN TOP LOCATIONS**

Brett Lowery *Director of Sales & Leasing*
859.292.5548 office | 937.974.5631 cell
blowery@corporex.com

Brian O'Toole *Senior Associate Leasing*
859.292.5511 office | 513.315.4650 cell
botoole@corporex.com

Brooke Jacobsen *Leasing Associate*
859.292.5557 office | 303.887.4457 cell
bjacobsen@corporex.com

Wilson Huber *Office Leasing Sales Associate*
859.292.5585 office | 317.605.0583 cell
whuber@corporex.com

CIRCLEPORT
Developed by **Corporex**